

DAILY REPORT



For more information, email trading_sales@tsx.com

April 3, 2023

Indices	April 3 Close	Previous Close	Change	% Change
S&P/TSX Composite Index	20,278.28	20,099.89		0.89 %
S&P/TSX 60 Index	1,218.94	1,206.31		1.05 %
S&P/TSX Venture Composite	631.15	634.18		-0.48 %
S&P/TSX Completion Index	1,206.35	1,203.23		0.26 %
S&P/TSX Smallcap Index	720.39	714.18		0.87 %

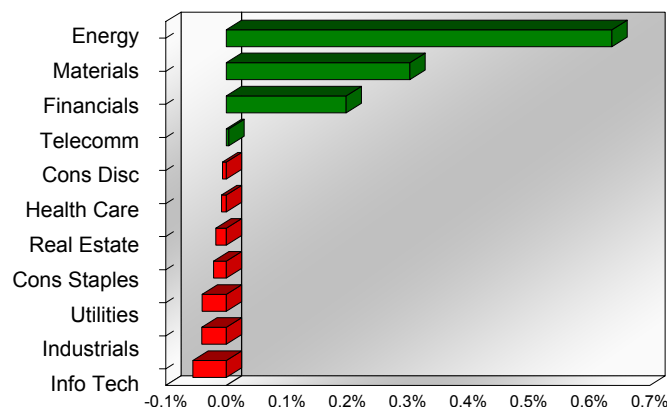
S&P/TSX Composite Index		
Advancers	Decliners	Unchanged
116	116	2

S&P/TSX Composite Index			
Top 10 Index Contributors		Top 10 Index Detractors	
Constituent	Index Contribution	Constituent	Index Contribution
CNQ	37.09	SHOP	-6.71
TECK.B	33.81	BN	-6.35
SU	22.82	BNS	-5.41
TD	22.03	BAM	-3.28
CVE	19.63	BEP.UN	-3.04
RY	16.24	CSU	-2.92
ENB	11.97	RCI.B	-2.87
FNV	6.60	CP	-2.60
BMO	5.59	ATD	-2.40
IMO	5.25	TFII	-1.96

S&P/TSX Composite Index			
Top 10 Advancers		Top 10 Decliners	
Constituent	Return	Constituent	Return
TECK.B	18.72%	BEP.UN	-5.33%
IPCO	9.17%	BHC	-4.57%
MEG	8.84%	PET	-3.91%
CVE	8.14%	BLU	-3.71%
BTE	6.90%	WEED	-3.38%
CPG	6.60%	MFI	-3.29%
POU	6.42%	CCA	-3.21%
ERF	6.42%	BAM	-3.12%
TVE	6.33%	OSK	-3.02%
NVA	6.22%	BBD.B	-2.97%

S&P/TSX Composite Index				
Sector	# of Index Constituents	Weight	Market Cap (\$B)	Index Contribution
Energy	40	17.28 %	\$507.50	128.11
Materials	51	12.67 %	\$372.16	60.95
Financials	29	29.93 %	\$878.93	39.83
Communication Services	6	4.77 %	\$140.05	0.82
Consumer Discretionary	15	3.62 %	\$106.37	-1.29
Health Care	6	0.33 %	\$9.63	-1.60
Real Estate	21	2.42 %	\$71.20	-3.53
Consumer Staples	11	4.29 %	\$125.86	-4.21
Utilities	16	4.43 %	\$130.22	-8.00
Industrials	27	13.68 %	\$401.79	-8.13
Information Technology	12	6.58 %	\$193.16	-11.14
S&P/TSX Composite Index	234	100.00 %	\$2,936.86	191.82

S&P/TSX Composite Index - Sectors Returns



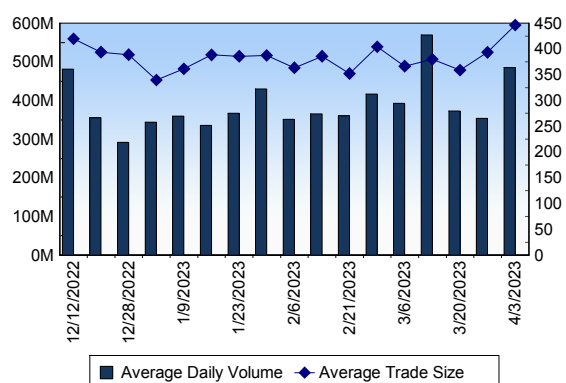
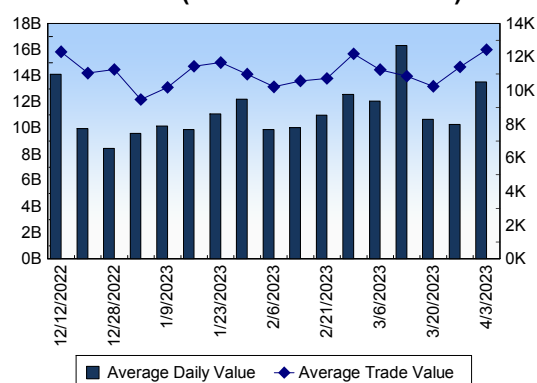
This report is published by TSX Inc. TSX Inc. does not guarantee either the completeness or the accuracy of this information. The information contained in this report is provided for informational purposes only and you agree not to rely upon the information contained in this report for any trading, business or financial purpose. These sheets are printed in Canada and issued by TSX Inc. under the express condition, to which everyone receiving or making use thereof assents, that no liability shall be incurred by TSX Inc. or its affiliated companies or any other vendor or donor, including, without limitation, for reliance on or for any errors or inaccuracies in this report. Neither TMX Group Limited, TSX Inc., nor any of their affiliated companies, guarantees the completeness of the information contained in this document and are not responsible for any errors or omission in or your use of, or reliance on, the information. This publication is under copyright. © 2016 TSX Inc. All rights reserved. Do not copy, distribute, sell or modify this publication without the prior written consent of TSX Inc. <http://www.tsx.com/trading>

TSX

Daily Volume	485,577,607
Daily Value	\$13,525,873,090
Daily Trades	1,087,654
Daily Symbols Traded	2,076

TSX ANONYMOUS TRADING

Daily Volume	193,394,243
Daily Value	\$5,068,717,266
Average Trade Size	366
% TSX Volume	39.83 %

TSX Volume**TSX Value (in Canadian Dollars)****Top 20 TSX Symbols by Volume**

Symbol	TSX Volume	TSX Value
YRI	23,617,782	\$186,572,067
TD	16,778,429	\$1,384,129,317
TRP	12,633,747	\$673,017,085
SU	12,572,118	\$555,424,975
CPG	12,190,364	\$123,145,603
CNQ	10,090,876	\$799,165,485
ATH	9,728,223	\$33,173,230
XLY	9,261,135	\$140,187
CVE	8,663,630	\$220,139,702
TECK.B	7,393,538	\$424,353,094
MFC	7,391,384	\$184,297,153
BTE	6,510,827	\$35,060,887
BNS	6,353,224	\$427,754,745
FM	5,708,259	\$184,159,271
ENB	5,435,579	\$284,333,169
CM	5,134,094	\$296,194,131
ABX	5,121,423	\$129,228,361
POW	4,902,662	\$170,375,244
TVE	4,788,298	\$19,875,997
AEM	4,740,301	\$334,093,416

Top 20 TSX Symbols by Value

Symbol	TSX Volume	TSX Value
TD	16,778,429	\$1,384,129,317
CNQ	10,090,876	\$799,165,485
TRP	12,633,747	\$673,017,085
SU	12,572,118	\$555,424,975
RY	4,232,764	\$553,765,167
BNS	6,353,224	\$427,754,745
TECK.B	7,393,538	\$424,353,094
AEM	4,740,301	\$334,093,416
CM	5,134,094	\$296,194,131
ENB	5,435,579	\$284,333,169
SHOP	3,808,041	\$241,761,764
CVE	8,663,630	\$220,139,702
BMO	1,781,339	\$216,125,851
YRI	23,617,782	\$186,572,067
MFC	7,391,384	\$184,297,153
FM	5,708,259	\$184,159,271
SJR.B	4,431,616	\$179,335,386
POW	4,902,662	\$170,375,244
CNR	964,928	\$154,223,230
PPL	3,272,371	\$145,182,179

ETF Trading

Daily Volume	34,247,030	Average Trade Value	\$12,899
Daily Value	\$779,122,746	Average Trade Size	567
# Trades	60,403	# of ETFs Traded	867

Top 10 ETFs by TSX Volume

Symbol	Market Volume	Market Value
HNU	3,883,391	\$59,980,495
XEG	2,988,118	\$46,375,998
XIU	2,107,700	\$64,869,466
XIC	1,877,942	\$60,486,808
HOU	1,334,994	\$19,622,979
HOD	1,322,964	\$12,767,837
ZEB	1,031,166	\$35,115,230
HQU	804,286	\$8,892,904
XRE	716,179	\$12,135,679
HQD	613,856	\$15,701,904

Top 10 ETFs by TSX Value

Symbol	Market Volume	Market Value
XIU	2,107,700	\$64,869,466
XIC	1,877,942	\$60,486,808
HNU	3,883,391	\$59,980,495
XEG	2,988,118	\$46,375,998
HND	499,806	\$38,634,992
ZEB	1,031,166	\$35,115,230
VFV	205,609	\$20,148,876
HOU	1,334,994	\$19,622,979
HQD	613,856	\$15,701,904
XFN	329,776	\$14,723,428

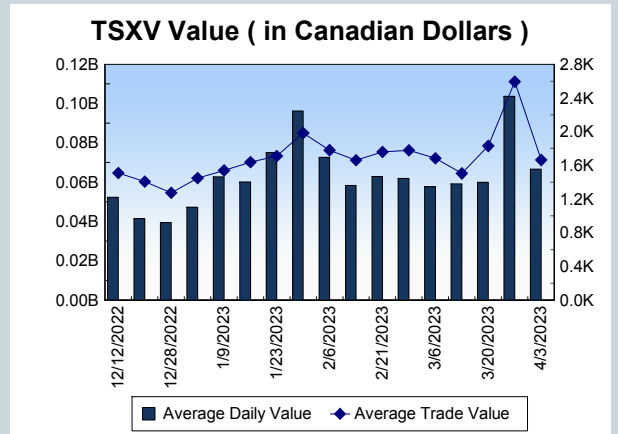
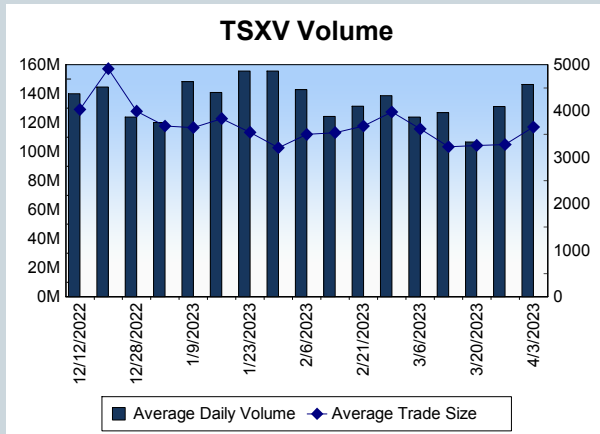
Block Trades	Non Block Trades
1,819	1,085,835

Top 5 Block Trade Brokers by Volume	
Broker	TSX Block Volume
BMO NESBITT BURNS INC.	44,012,000
RBC CAPITAL MARKETS	30,724,000
NATIONAL BANK FINANCIAL	20,056,800
TD SECURITIES INC.	19,442,500
INSTINET CANADA LTD.	18,430,400

Top 5 Block Trade Symbols by Volume	
Symbol	TSX Block Volume
YRI	19,321,200
TD	13,321,800
TRP	10,664,500
CNQ	6,772,400
SU	6,245,200

TSXV	
Daily Volume	146,318,004
Daily Value	\$66,576,616
Daily Trades	40,034
Daily Symbols Traded	1,203

TSXV ANONYMOUS TRADING	
Daily Volume	73,009,378
Daily Value	\$39,941,035
Average Trade Size	3,452
% TSXV Volume	49.90%



Top 20 TSXV Symbols by Volume		
Symbol	TSXV Volume	TSXV Value
CUI	10,449,134	\$559,535
CRI	5,639,300	\$293,608
VXTR	3,554,119	\$696,639
JRV	2,902,062	\$230,667
FUU	2,567,124	\$908,374
BXR	2,410,032	\$12,050
AN	1,936,785	\$1,241,757
PEI	1,839,107	\$249,219
EMPR	1,822,762	\$526,337
STND	1,514,814	\$86,223
SNM	1,492,175	\$107,111
VERT	1,371,095	\$83,886
TYMB	1,250,000	\$6,250
SWAN	1,086,354	\$190,810
ATX	1,055,395	\$1,657,263
SEI	1,038,817	\$157,840
RGG	1,007,000	\$60,420
FIND	985,241	\$524,937
CANB	985,085	\$154,470
GSVR	938,505	\$549,093

Top 20 TSXV Symbols by Value		
Symbol	TSXV Volume	TSXV Value
LMN	440,620	\$6,419,251
TOI	57,403	\$5,487,326
SGML	71,090	\$3,695,835
ARTG	378,781	\$1,712,523
ATX	1,055,395	\$1,657,263
CRE	621,208	\$1,483,604
HIVE	284,431	\$1,263,778
AN	1,936,785	\$1,241,757
LI	410,908	\$1,235,913
NKL	880,037	\$1,051,496
QIPT	95,257	\$908,747
FUU	2,567,124	\$908,374
NFG	130,802	\$897,977
SOIL	311,269	\$821,646
PMET	66,888	\$821,361
RECO	520,678	\$773,803
FOM	184,474	\$707,768
VXTR	3,554,119	\$696,639
ETL	235,012	\$644,168
CNX	131,765	\$574,885

Dark TSX/TSXV Trading			
Volume	23,708,150	Daily Trades	103,215
Value	707,394,419	Daily Symbols Traded	1,249